



A dynamic model for the investigation of touch contamination in intravascular device-related infections

Nicole Gavin



Financial Disclosures

Please include the following information:

1. Disclosure of Relevant Financial Relationships

I have the following financial relationships to disclose:

Grant/Research support from: NHMRC Centre of Research Excellence in Nursing, RBWH Foundation, American Society of Parenteral & Enteral Nutrition, Baxter

Honoraria from: Novartis

Employee of: Royal Brisbane & Women's Hospital, Metro North Hospital and Health Service

2. Disclosure of Off-Label and/or investigative Uses

I will not discuss off label use and/or investigational use in my presentation.





Baxter





Baxter

aspen
American Society for Parenteral
and Enteral Nutrition

FBWH
FOUNDATION





Metro North
Hospital and Health Service

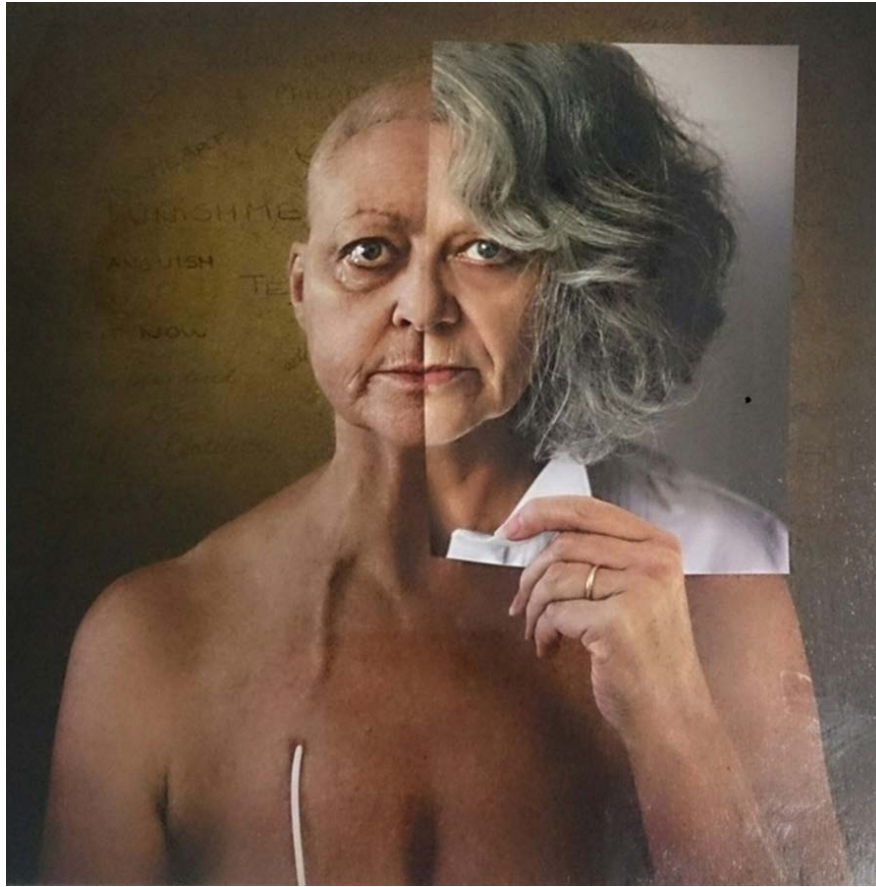
AVATAR
GROUP
Alliance for Vascular Access Teaching and Research

Griffith
UNIVERSITY

MENZIES
HEALTH INSTITUTE
QUEENSLAND

Mucositis

Mild or moderate oral mucositis = Grades 1 and 2 (WHO)		Severe oral mucositis = Grades 3 and 4 (WHO)	
			
<p>Grade 1 Erythema Unpleasant sensation (pain)</p>	<p>Grade 2 Erythema Ulcers Pain Can eat solids</p>	<p>Grade 3 Ulcers Significant pain Only a liquid diet is possible</p>	<p>Grade 4 Ulcers Intolerable pain Feeding by mouth impossible, enteral or parenteral feeding obligatory Cannot talk</p>



Baxter

aspen
American Society for Parenteral
and Enteral Nutrition

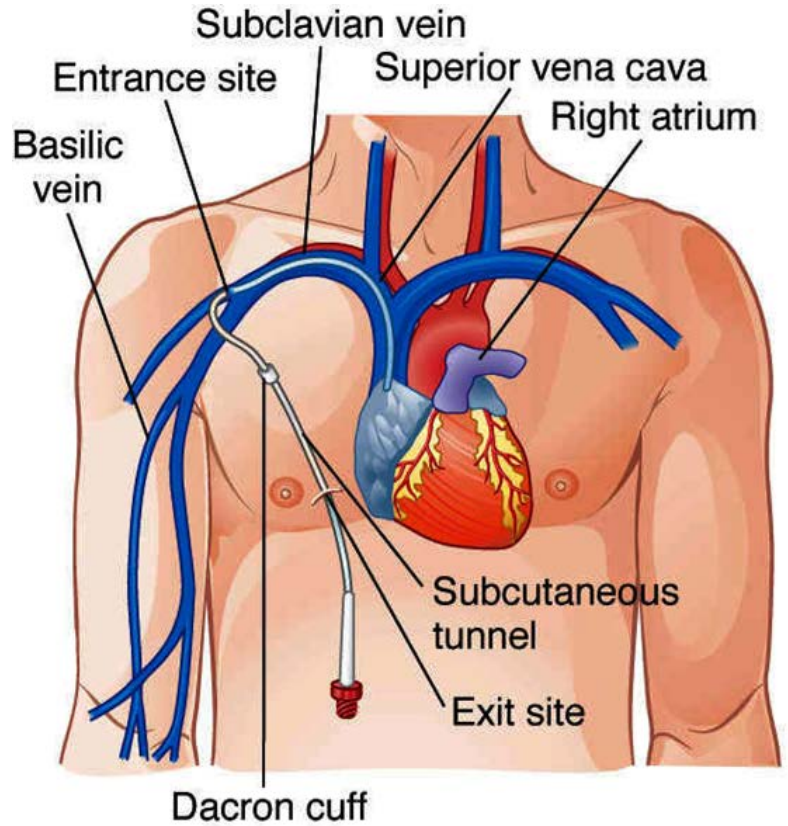
**FBWH
FOUNDATION**

Metro North
Hospital and Health Service

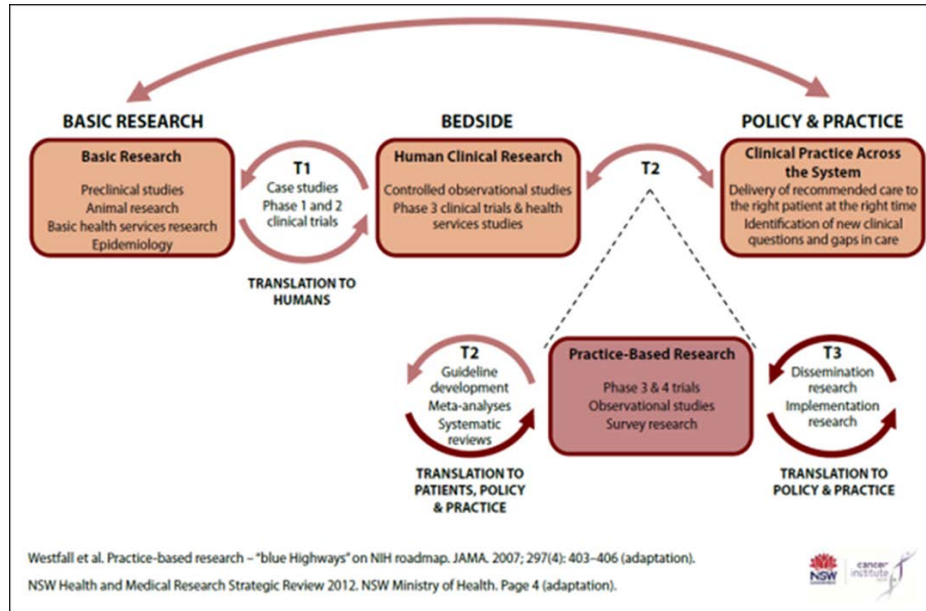
AVATAR
GROUP
Alliance for Vascular Access Teaching and Research

Griffith
UNIVERSITY

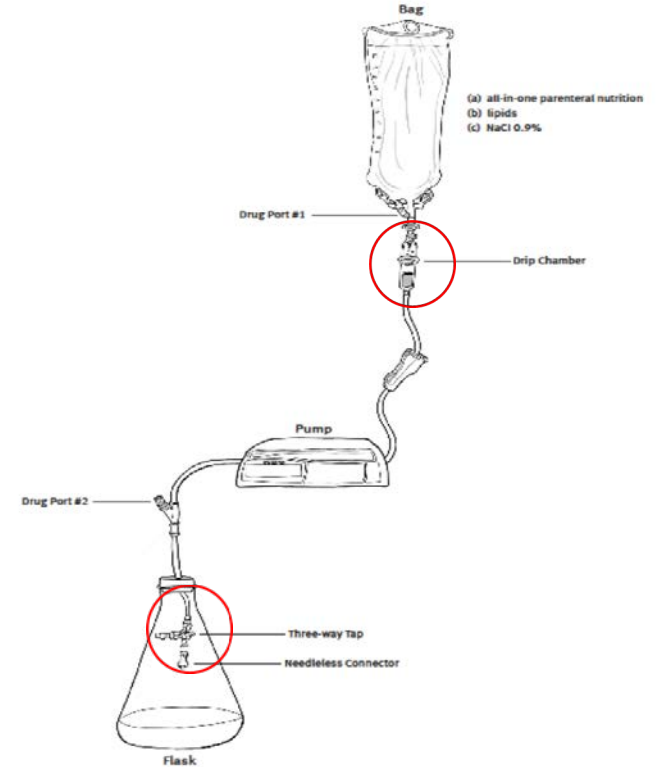
MENZIES
HEALTH INSTITUTE
QUEENSLAND



Model of translational research



Intravascular administration set (IVAS) model





Baxter

aspen
American Society for Parenteral
and Enteral Nutrition

FBWH
FOUNDATION

Metro North
Hospital and Health Service

AVATAR
GROUP
Alliance for Vascular Access Teaching and Research

Griffith
UNIVERSITY

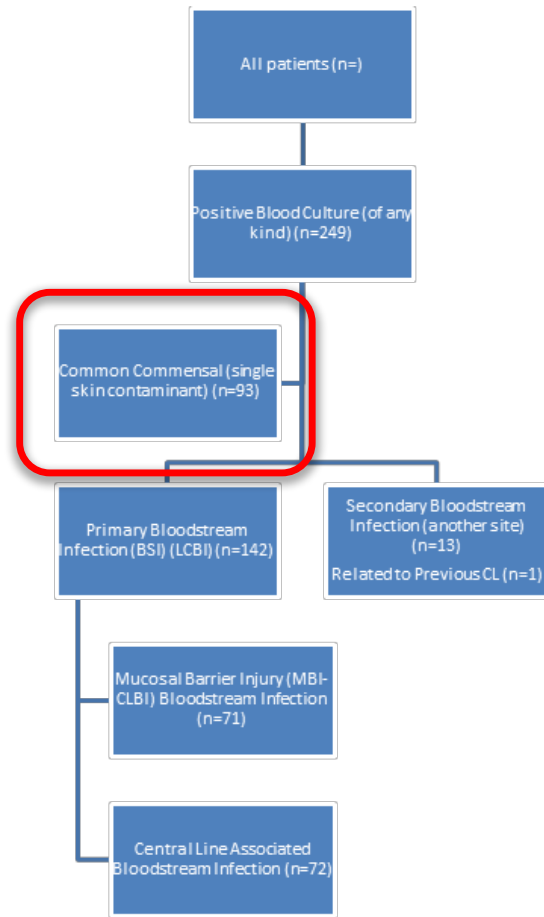
MENZIES
HEALTH INSTITUTE
QUEENSLAND

Cohort study

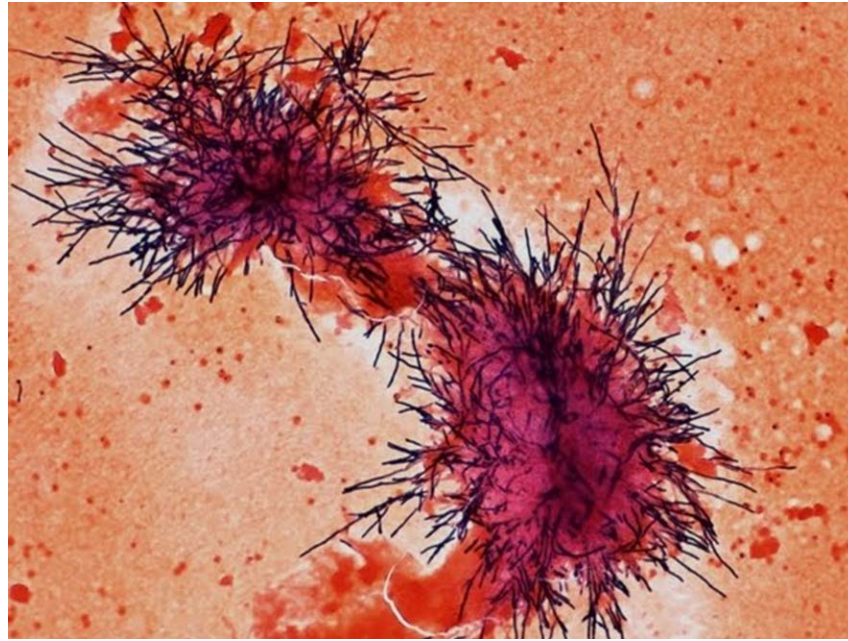
	PN n (%)	MBI-LCBSI n (%)	CLABSI n (%)	CRBSI n (%)
Total RBWH (n=799)	178 (22.3)	70 (8.7)	71 (8.9)	22 (2.7)
<i>Haematology (n=247)</i>	12 (4.9)	18 (7.2)	24 (9.7)	7 (2.3)
<i>*Allogeneic BMT (n=222)</i>	93 (41.9)	44 (19.8)	22 (9.9)	9 (4.1)
<i>*Autologous BMT (n=112)</i>	15 (13.4)	8 (7.1)	15 (13.4)	3 (2.7)
<i>Oncology (n=23)</i>	3 (13.0)	0 (0)	1 (4.3)	0 (0)
<i>Medical (n=44)</i>	7 (16.0)	0 (0)	3 (6.8)	1 (2.3)
<i>Surgical (n=90)</i>	34 (37.8)	0 (0)	3 (3.3)	0 (0)
<i>Trauma and burns (n=61)</i>	14 (23.0)	0 (0)	3 (4.9)	2 (3.3)

*Includes subsequent admissions post BMT

Cohort study



Post doctoral studies



Baxter

aspen
American Society for Parenteral
and Enteral Nutrition

**FBWH
FOUNDATION**

Metro North
Hospital and Health Service

**AVATAR
GROUP**
Alliance for Vascular Access Teaching and Research

**Griffith
UNIVERSITY**

MENZIES
HEALTH INSTITUTE
QUEENSLAND



THANK YOU

